

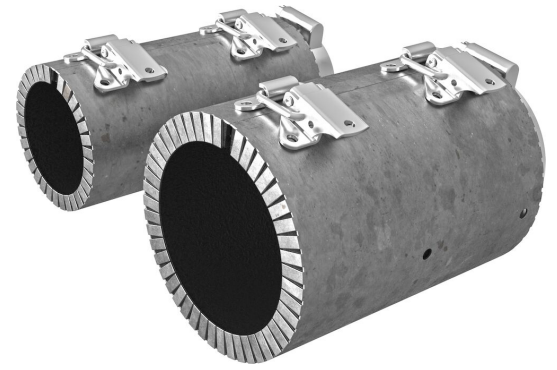


Collarín de sellado Roxtec Sleeve-it™

Collarín de protección contra incendios para conexiones entre tuberías de plástico y acero.

El collarín de sellado Roxtec Sleeve-it™ garantiza protección contra incendios sin soldadura para conexiones entre tuberías plásticas y de acero de diferentes tamaños. La carcasa de acero inoxidable envuelve fácilmente la unión entre tuberías y contiene capas de material de base intumescente que reacciona al calor para proteger el collarín en caso de incendio. El collarín se utiliza en sistemas sin presurizar, en proyectos de construcción nueva y de renovación.

- Ligero
- Perfecto para renovaciones
- Rápido y sencillo de instalar



Características del producto



Calificación contra incendios

Estructura de instalación



Metal

Tipo de montaje



Atornilladura

Calificaciones y certificados

Fuego

- CLASE A de acuerdo al estándar FTP IMO 2010
- CLASE B de acuerdo al estándar FTP IMO 2010

Datos de los componentes de sellado

Componentes de sellado



Collarín de sellado Sleeve-it™

Para obtener información detallada, visite [roxtec.com](https://www.roxtec.com).



Kits de sellos preconfigurados

mm/kg



SLEEVE-IT
TR-MAR50/50



SLEEVE-IT TR-MAR75/75



SLEEVE-IT
TR-MAR50/60 (2")



SLEEVE-IT TR-MAR75/90
(3")



SLEEVE-IT
TR-MAR90/90

Título	Configuración	Dimensiones de abertura Ø	Peso	N.º de art.
SLEEVE-IT TR-MAR50/50		0 - 0	0.44	106289
SLEEVE-IT TR-MAR75/75		0 - 0	0.7	106298
SLEEVE-IT TR-MAR50/60 (2")		0 - 0	0.5	106304
SLEEVE-IT TR-MAR75/90 (3")		0 - 0	0.7	106307
SLEEVE-IT TR-MAR90/90		0 - 0	0.7	106310

The product information provided by Roxtec does not release the purchaser of the Roxtec system, or part thereof, from the obligation to independently determine the suitability of the products for the intended process, installation and/or use.

Roxtec gives no guarantee for the Roxtec system or any part thereof and assumes no liability for any loss or damage whatsoever, whether direct, indirect, consequential, loss of profit or otherwise, occurred or caused by the Roxtec systems or installations containing components not manufactured by an authorized manufacturer and/or occurred or caused by the use of the Roxtec system in a manner or for an application other than for which the Roxtec system was designed or intended.

Roxtec expressly excludes any implied warranties of merchantability and fitness for a particular purpose and all other express or implied representations and warranties provided by statute or common law. User determines suitability of the Roxtec system for intended use and assumes all risk and liability in connection therewith. In no event shall Roxtec be liable for indirect, consequential, punitive, special, exemplary or incidental damages or losses.

The Roxtec products are offered and sold in accordance with the conditions of the Roxtec General Terms of Sales. The latest version of the Roxtec General Terms of Sales can be downloaded from <https://www.roxtec.com/en/about-us/about-roxtec/general-terms-of-sales/>

We reserve the right to make changes to the product and technical information without further notice. Any errors in print or entry are no claims for indemnity. The content of this publication is the property of Roxtec International AB and is protected by copyright.

This document was generated on: 2024-04-05